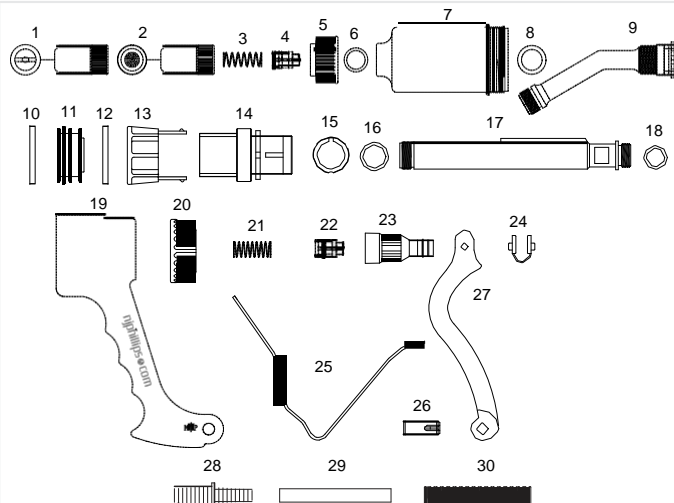




- Administers a variety of animal health products.
- Easy access for cleaning with external valves and removable cylinder.
- Durable and reliable.
- Ergonomic 'ripple-grip' handle.



PARTS BREAKDOWN



- | | |
|---------------------------------------|-------------------------------------|
| 1. Fan Pattern Nozzle (SH1038) | 16. Push Rod Seal Ring (SP768) |
| 2. Swirl Pattern Nozzle (SH1120) | 17. Push Rod (SH980) |
| 3. Delivery Valve Spring (SP1108-A) | 18. Inlet Adaptor Seal Ring (SP340) |
| 4. Delivery Valve (SH1446/C4) | 19. Handle (SH1588) |
| 5. Delivery Cage Lock Nut (SH977) | 20. Dose Collar (SH983) |
| 6. Nozzle Tip Seal Ring (SP340) | 21. Inlet Valve Spring (SP285-A) |
| 7. Cylinder (SH978/U) | 22. Inlet Valve (SH1446/C4) |
| 8. Cylinder Seal Ring (SP341) | 23. Inlet Adaptor (SH314) |
| 9. Nozzle (SH976) | 24. Lever Pads (SP1210) |
| 10. Piston Washer (SP982) | 25. Return Spring (SP592) |
| 11. Piston (SH986) | 26. Lever Pin (SH200) |
| 12. Piston Washer (SP982) | 27. Lever (SH198/G4) |
| 13. Dose Adjustor (SH981) | 28. Barb Tube Adaptor (SH1027) |
| 14. Dose Sleeve (SH982) | 29. Container Tube Adaptor (SH1022) |
| 15. Dose Adjustor Guide Ring (SH1020) | 30. Feed Tube Spring (SP67) |

MODEL	DOSE RANGE	INCREMENTS
65ml	2.5ml – 65ml	2.5ml
KIT NO.	PART NAME	PART NO.
WX1482	Major Service Kit	3,4,6,7,8,10,12,16,18,21,22,24,26.
WX1629A	1/4" Hose Adaptor Kit	Not shown.
PLEASE ORDER BY KIT AND PART NAME		



Customise this instrument with your brand colour and logo. Contact us for details.



njphillips.com
Our expertise is in your hands.

LOCKED BAG 8, GOSFORD NSW, AUSTRALIA 2250

P +61 2 4340 2044 F +61 2 4340 1991 | E njp1@njphillips.com.au